

SOUTH AUSTRALIAN ECONOMIC INDICATORS

EMBARGO: 11:30AM (CANBERRA TIME) MON 1 SEP 2003

C O N T E N T S

	<i>page</i>
Notes.....	2
REVIEW	
Overview	3
Selected features	4
TABLES	
List of tables	5
Statistical summary	6
State summary	8
State accounts	9
International trade	10
Consumption and investment	13
Production	15
Consumer price index	19
Labour force and demography	20
Average weekly earnings	23
Financial markets	24
ADDITIONAL INFORMATION	
Sources for summary tables	25

I N Q U I R I E S

- For further information about these and related statistics, contact Felicité McCracken on Adelaide 08 8237 7604 or the National Information and Referral Service on 1300 135 070.

NOTES

FORTHCOMING ISSUES

<i>ISSUE</i>	<i>RELEASE DATE</i>
October 2003	1 October 2003
November 2003	3 November 2003
December 2003	1 December 2003
January 2004	19 December 2003
February 2004	2 February 2004
March 2004	1 March 2004

ABOUT THIS PUBLICATION

South Australian Economic Indicators is a monthly publication which contains the latest available data at the time of preparation for a range of statistical series that have been identified as indicators of economic activity in this state. In a number of cases the figures presented are preliminary and subject to revision in subsequent issues.

SYMBOLS AND OTHER USAGES

n.a.	not available
n.y.a.	not yet available
qtr	quarter
*	subject to sampling variability too high for most practical purposes
. .	not applicable
0, 0.0	nil, or rounded to zero

ROUNDING

Where figures have been rounded, discrepancies may occur between sums of the component items and totals.

INFORMATION

More detailed information on each series, including explanatory and technical notes, can be obtained from other Australian Bureau of Statistics publications or alternative data sources. To assist those seeking further information, publication source numbers are shown in tables 1 and 2, as a reference to the source of summary tables section on page 25.

Alan Mackay
Regional Director
South Australia

OVERVIEW

The data in this Overview are presented in trend terms, unless otherwise stated.

INTERNATIONAL TRADE

The value of South Australian merchandise exports in original terms for the month of June 2003 was \$576.6m. This was a decrease of 11.7% from May 2003 and 27.6% down on the June 2002 figure of \$796.0m. There has been a decrease of 8.9% in the value of exports in the 12 months to June 2003 over the preceding 12 months.

The value of South Australian merchandise imports in original terms for June 2003 was \$403.6m. This was a decrease of 18.8% from \$497.3m recorded in May 2003 and 2.7% higher than the June 2002 figure of \$393.1m. Overall, the value of imports in the 12 months to June 2003 was 6.7% higher than the value in the previous twelve months (\$5,730.3m compared to \$5,346.8m).

CONSUMPTION AND INVESTMENT

In the twelve months to June 2003 retail turnover increased by 6.2% to \$1,112.7m, with a moderate to strong trend growth over the last six months.

The estimate of new motor vehicle sales fell to 5,088 in July, a decrease of 13.0% on the previous month but an increase of 18.9% on July 2002.

Private new capital expenditure in the March quarter 2003 was \$948m, an increase of 17.0% on the March quarter 2002, and an increase of 2.0% on the December 2002 quarter figure.

HOUSING

The estimate of total dwelling units approved for building has risen in the past two months following seven months of decline, and in June 2003 was 850. In the twelve months to June 2003, dwelling approvals fell by 0.8% on the previous financial year.

CONSUMER PRICE INDEX

The all groups consumer price index in Adelaide for the June quarter 2003 was 144.3, an increase of 3.7% on the level recorded for the June 2002 quarter and down 0.2% on the March quarter 2003.

LABOUR FORCE AND DEMOGRAPHY

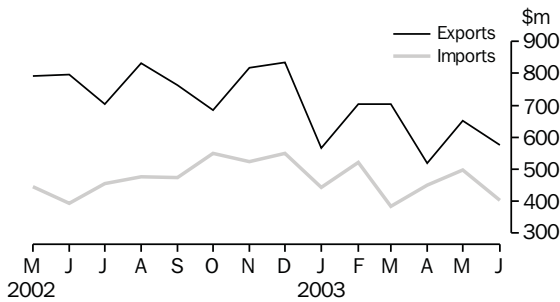
The estimate of employed persons in South Australia has risen continuously since April 2001 to 720,700 in July 2003 and was 28,300 persons higher than the level of twelve months ago (692,400), an increase of 4.1%, and up by 0.1% on June 2003. The total number of persons employed full-time in South Australia was 507,300 in July 2003 which was 7.0% higher than the July 2002 estimate of 474,100. The unemployment rate for South Australia was 6.1% in July 2003, and the participation rate was 62.3%. (In June 2003 the unemployment rate was 6.2%.)

FINANCIAL MARKETS

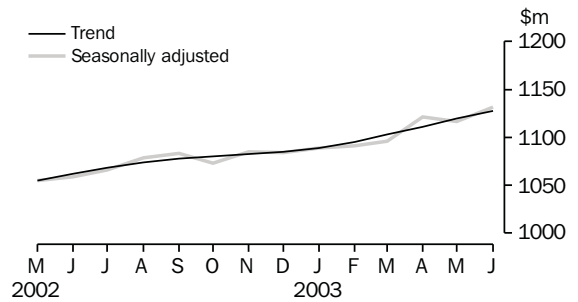
Secured housing finance commitments (excluding alterations and additions) continued an upward trend with a value of \$635.4m in June 2003, an increase of 2.6% over the previous month, and an increase of 28.6% over June 2002 (\$494.1m).

SELECTED FEATURES

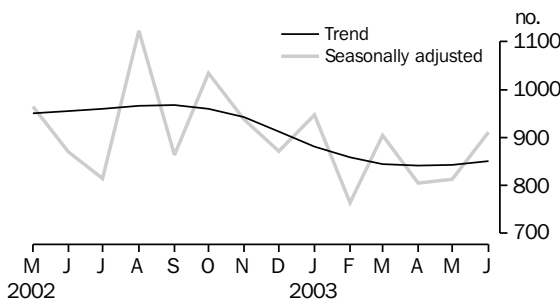
MERCHANDISE EXPORTS AND IMPORTS



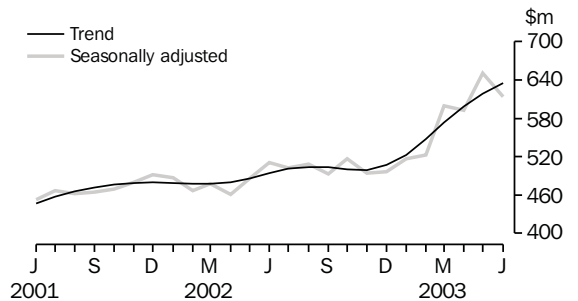
RETAIL TURNOVER



DWELLING UNITS APPROVED

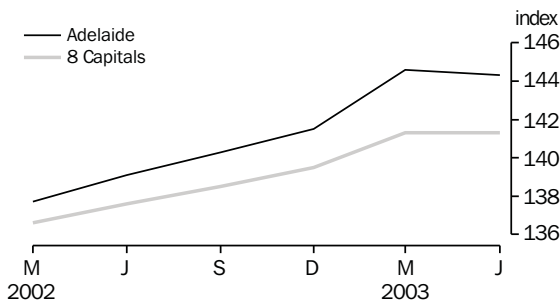


SECURED HOUSING FINANCE COMMITMENTS(a)

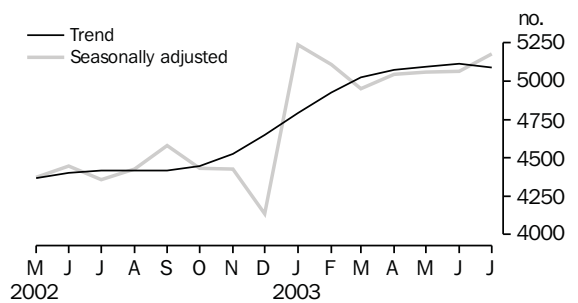


(a) Excludes alterations and additions. Includes refinancing.

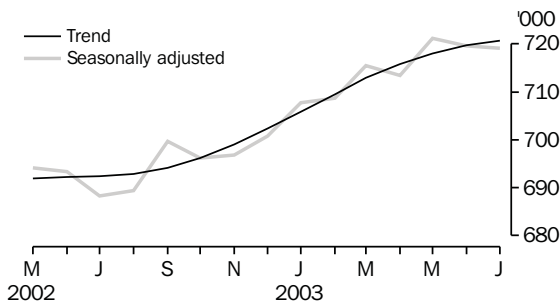
CONSUMER PRICE INDEX



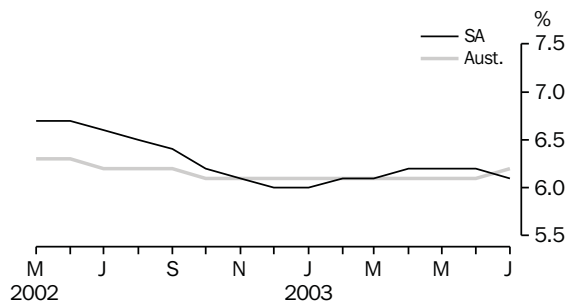
NEW MOTOR VEHICLE SALES



EMPLOYED PERSONS



UNEMPLOYMENT RATE—TREND



LIST OF TABLES

			Page
STATISTICAL SUMMARY	1	Statistical summary	6
	2	State summary	8
STATE ACCOUNTS	3	State accounts at current prices	9
	4	State accounts at chain volume measures	9
INTERNATIONAL TRADE	5	Merchandise exports, by selected commodity group	10
	6	Merchandise exports, by selected countries and country groups	11
	7	Merchandise imports, by selected commodity group	12
CONSUMPTION AND INVESTMENT	8	Turnover of retail establishments, by industry—trend	13
	9	New motor vehicle sales, by type of vehicle	13
	10	Actual private new capital expenditure, by selected industry and type of asset	14
	11	Tourist accommodation	14
PRODUCTION	12	Building approvals	15
	13	Building commencements	16
	14	Value of building work done and completed during period	17
	15	Production, livestock products and selected commodities	18
	16	Consumer price index, by group—Adelaide	19
LABOUR FORCE AND DEMOGRAPHY	17	Estimated resident population and components of population change	20
	18	Births, deaths, marriages and divorces	20
	19	Civilian labour force status	21
	20	Civilian labour force, unemployment and participation rates	22
AVERAGE WEEKLY EARNINGS	21	Average weekly earnings of employees	23
FINANCIAL MARKETS	22	Secured housing finance commitments	24
	23	Finance commitments	24

Indicator	Period	South Australia			Australia			SA as a % of Aust.	Source index
		Number	% change from		Number	% change from			
			Previous period	Same period previous year		Previous period	Same period previous year		
State accounts									
Domestic final demand									
Current prices trend (\$m)	Mar qtr 03	13 933	2.0	9.4	194 110	1.8	8.0	7.2	(1)
Chain volume measures trend (\$m)	Mar qtr 03	13 197	1.0	6.0	185 477	1.1	5.4	7.1	(1)
Private final consumption expenditure									
Current prices trend (\$m)	Mar qtr 03	8 455	1.9	8.3	114 372	1.5	6.3	7.4	(1)
Chain volume measures trend (\$m)	Mar qtr 03	7 949	0.7	4.2	108 552	0.7	3.5	7.3	(1)
Private gross fixed capital formation									
Current prices trend (\$m)	Mar qtr 03	2 493	2.1	18.4	38 925	3.3	17.0	6.4	(1)
Chain volume measures trend (\$m)	Mar qtr 03	2 431	2.0	16.8	37 738	2.7	14.9	6.4	(1)
Compensation of employees									
Current prices trend (\$m)	Mar qtr 03	5 834	1.7	5.7	90 755	1.6	6.6	6.4	(1)
International accounts									
Exports (\$m)	June 03	576.6	-11.7	-27.6	8 797.5	-2.3	-10.3	6.6	(2)
Imports (\$m)	June 03	403.6	-18.8	2.7	10 728.6	3.5	11.6	3.8	(2)
Consumption and investment									
Retail turnover									
Current prices original (\$m)	Jun 03	1 044.9	-5.7	5.7	14 049.3	-4.5	1.6	7.4	(3)
Current prices trend (\$m)	Jun 03	1 127.7	0.8	6.2	14 942.4	0.7	5.4	7.5	(3)
Chain volume measures original (\$m)	Jun qtr 03	3 140.2	4.1	4.5	41 936.8	3.3	3.7	7.5	(3)
New motor vehicle sales									
Original (no.)	Jul 03	5 298	-13.0	18.9	79 521	-13.6	14.0	6.7	(4)
Trend (no.)	Jul 03	5 088	-0.5	15.1	77 678	0.4	11.7	6.6	(4)
Private new capital expenditure									
Current prices original (\$m)	Mar qtr 03	907	-21.7	27.0	11 655	-19.0	14.3	7.8	(5)
Current prices trend (\$m)	Mar qtr 03	948	2.0	17.0	12 820	2.6	14.6	7.4	(5)
Private new capital expenditure (\$m)	2001-02	3 113	8.8	..	44 380	4.1	..	7.0	(5)
Tourist accommodation takings (\$m)	Mar qtr 03	59.1	-8.9	1.5	1 244.7	-5.3	2.5	4.8	(6)
Production									
Dwelling unit approvals									
Original (no.)	Jun 03	907	10.2	9.8	14 217	-3.4	3.4	6.4	(7)
Trend (no.)	Jun 03	850	0.8	-11.0	14 036	0.7	-7.1	6.1	(7)
Dwelling units commenced (no.)	Mar qtr 03	2 376	-13.9	1.8	38 640	-13.4	0.3	6.1	(8)
Value of non-residential building approvals—trend (\$m)									
	Jun 03	106.5	14.5	76.3	1296.9	2.4	9.6	8.2	(7)
Value of total building activity									
Commenced (\$m)	Mar qtr 03	570.8	-23.5	13.2	11 621.1	-13.6	8.5	4.9	(8)
Work done (\$m)	Mar qtr 03	592.2	-2.9	18.3	11 298.3	-7.5	19.8	5.2	(8)
Work yet to be done (\$m)	Mar qtr 03	994.7	-0.4	33.8	20 530.9	4.1	26.0	4.8	(8)
Value of engineering construction work done (\$m)									
	Mar qtr 03	444.7	-10.2	20.3	5 989.4	-5.6	17.0	7.4	(9)
Manufacturing production									
Red meat trend (tonnes)	Jun qtr 03	58 844	-3.6	-4.3	741 807	-3.1	-4.8	7.9	(11)
Mineral exploration expenditure (other than for petroleum) (\$m)									
	Mar qtr 03	6.0	-40.0	-17.8	157.4	-18.4	17.3	3.8	(12)

Indicator	Period	South Australia			Australia			SA as a % of Aust.	Source index
		Number	% change from		Number	% change from			
			Previous period	Same period previous year		Previous period	Same period previous year		
Prices(a)									
CPI—All groups (index no.)	Jun qtr 03	144.3	-0.2	3.7	141.3	0.0	2.7	..	(13)
Price index of materials used in house building (index no.)	Mar qtr 03	136.8	0.4	2.8	132.1	0.9	3.4	..	(14)
Price index of materials used in building other than houses (index no.)	Mar qtr 03	125.1	1.1	3.6	125.7	1.3	4.5	..	(14)
Price index of established houses (index no.)	Mar qtr 03	185.0	4.3	20.6	213.1	3.4	18.0	..	(15)
Price index of project homes (index no.)	Mar qtr 03	156.7	0.8	5.0	144.7	1.5	4.5	..	(15)
Labour force and demography									
Population (resident at end qtr) ('000)	Dec qtr 02	1 524.1	0.1	0.6	19 786.6	0.3	1.3	7.7	(16)
Natural increase of the population ('000)	Dec qtr 02	1.5	56.5	19.3	30.6	23.5	7.2	4.9	(16)
Labour force									
Original ('000)	Jul 03	760.8	-0.5	3.9	10 075.9	-0.5	1.7	7.6	(17)
Trend ('000)	Jul 03	767.9	0.1	3.5	10 103.7	-0.2	1.6	7.6	(17)
Employed persons									
Original ('000)	Jul 03	718.3	0.0	4.5	9 507.9	-0.2	1.7	7.6	(17)
Trend ('000)	Jul 03	720.7	0.1	4.1	9 481.6	-0.2	1.7	7.6	(17)
Participation rate									
Original(b) (%)	Jul 03	61.8	-0.3	1.9	63.3	-0.5	0.0	..	(17)
Trend(b) (%)	Jul 03	62.3	0.0	1.6	63.6	-0.1	0.1	..	(17)
Unemployment rate									
Original(b) (%)	Jul 03	5.6	-0.5	-0.5	5.6	-0.3	0.0	..	(17)
Trend(b) (%)	Jul 03	6.1	-0.1	-0.5	6.2	0.1	0.0	..	(17)
Job vacancies ('000)	May 03	5.8	-17.7	-17.0	99.5	-10.6	10.1	5.9	(18)
Industrial disputes ('000 working days lost)	May 03	0.1	-83.3	-90.0	21.3	54.3	-27.8	0.5	(19)
Income									
Average weekly earnings (full-time adults; ordinary time)									
Original (\$)	May qtr 03	859.7	1.0	7.5	921.0	2.3	6.3	..	(20)
Trend (\$)	May qtr 03	864.6	2.6	7.9	918.8	1.7	5.7	..	(20)
Wage cost index (total hourly rate excluding bonuses)(c) (index no.)	Jun qtr 03	119.7	0.5	3.9	120.1	0.6	3.6	..	(21)
Financial markets									
Secured housing finance(d)									
Original (\$m)	Jun 03	616.3	-8.1	23.8	10 196.9	-3.7	25.8	6.0	(22)
Trend (\$m)	Jun 03	635.4	2.6	28.6	9 954.6	2.5	20.2	6.4	(22)
Finance commitments									
Personal (\$m)	Jun 03	439.3	-0.2	16.6	6 487.4	2.0	15.9	6.8	(23)
Commercial (\$m)	Jun 03	1056.6	25.6	9.4	25 732.5	16.7	-1.7	4.1	(23)
Lease (\$m)	Jun 03	18.5	19.4	6.9	645.4	3.5	-7.6	2.9	(23)
Interest rates(b)									
Banks new housing loans (%)	Jul 03	6.55	0.0	0.0	..	(24)
Bank loans—small, medium business(e) (%)	Jul 03	8.35	0.0	0.0	..	(24)
Bank loans—large business (%)	Jul 03	8.35	0.0	0.0	..	(24)

(a) Base year of each index 1989-90 = 100.

(b) Change is shown in terms of percentage points.

(c) Base year of index Sep 1997 = 100.

(d) Excludes alterations and additions. Includes refinancing.

(e) Rate for business loans over \$50,000.

2

STATE SUMMARY

Indicator	Period	NSW	Vic.	Qld	SA	WA	Tas.	NT	ACT	Source index
SELECTED INDICATORS										
CPI—All groups(a) (index no.)	Jun qtr 03	142.2	140.9	141.8	144.3	137.4	140.8	137.9	140.7	(13)
Participation rate trend (%)	Jul 03	62.7	63.3	64.5	62.4	66.3	58.5	71.1	71.0	(17)
Unemployment rate trend (%)	Jul 03	6.2	5.9	6.8	6.1	5.9	7.4	6.6	4.1	(17)
Average weekly earnings (full-time adults; ordinary time) trend (\$)	Feb 03	951.20	900.70	821.30	841.10	890.70	826.40	875.80	1 037.00	(20)

SELECTED INDICATORS PER HEAD OF POPULATION(b)

State final demand										
Chain volume measures trend (\$'000)	Mar qtr 03	9.5	9.4	8.8	8.7	9.3	7.7	12.3	16.1	(1)
Retail turnover										
Current prices original (\$)	May 03	763.3	711.0	750.4	727.3	739.3	647.9	774.3	978.8	(3)
Current prices, trend	May 03	769.0	717.8	754.5	732.2	734.6	643.6	761.9	976.6	(3)
New motor vehicle sales trend (no. per '000 population)	Jul 03	3.9	4.3	4.1	3.3	3.7	3.1	3.4	3.9	(4)
Private new capital expenditure										
Current prices trend (\$)	Mar qtr 03	540.4	681.4	600.2	622.0	903.4	470.1	2 244.5	529.9	(5)
Dwelling unit approvals										
Original (no. per '000 population)	Jun 03	0.528	0.809	0.792	0.595	1.251	0.398	0.360	0.502	(7)
Trend (no. per '000 population)	Jun 03	0.565	0.831	0.776	0.558	0.952	0.451	0.314	0.552	(7)
Secured housing finance(c) (\$)	Jun 03	593.5	470.0	514.2	404.4	537.4	269.2	292.7	494.9	(22)

PERCENTAGE CHANGE FROM PREVIOUS PERIOD

State final demand										
Chain volume measures trend (%)	Mar qtr 03	1.1	0.7	1.4	1.0	1.1	0.4	-2.2	0.9	(1)
Retail turnover										
Current prices original (%)	Jun 03	-4.4	-4.6	-3.4	-5.7	-6.3	-6.4	-0.7	-2.3	(3)
Current prices, trend	Jun 03	0.6	0.5	0.9	0.8	0.7	0.7	0.2	1.2	(3)
New motor vehicle sales trend (%)	Jul 03	0.0	0.4	0.9	-0.5	1.5	1.5	-1.9	-0.8	(4)
Private new capital expenditure										
Current prices trend (%)	Mar qtr 03	2.3	3.0	1.7	2.0	3.2	0.9	-3.1	7.5	(5)
Dwelling unit approvals										
Original (%)	Jun 03	-14.2	-1.3	-6.6	10.2	18.4	-24.7	-26.8	-15.6	(7)
Trend (%)	Jun 03	-0.6	3.4	-1.2	0.8	1.3	3.9	-2.0	-6.4	(7)
CPI—All groups (%)	Jun qtr 03	0.1	0.0	0.0	-0.2	0.0	0.6	0.3	0.0	(13)
Participation rate trend(d) (%)	Jul 03	-0.2	-0.1	-0.2	0.1	-0.1	-0.3	-0.8	-0.2	(17)
Unemployment rate trend(d) (%)	Jul 03	0.1	0.0	0.0	-0.1	0.0	-0.3	-0.1	-0.1	(17)
Average weekly earnings (full-time adults; ordinary time) trend (%)	May qtr 03	1.7	1.5	1.2	2.6	1.5	0.7	1.8	1.9	(20)
Secured housing finance (%)	Jun 03	-6.4	-0.5	1.4	-8.1	-6.6	-0.3	-5.3	-3.9	(22)

(a) Base year of index 1989-90 = 100.

(b) The latest quarterly estimate of Australian resident population has been used to calculate ratios for subsequent periods.

(c) Excludes alterations and additions. Includes refinancing.

(d) Change is shown in terms of percentage points.

3

STATE ACCOUNTS AT CURRENT PRICES

Period	<i>Final consumption expenditure</i>		<i>Gross fixed capital formation</i>			State final demand	Gross State product	Compensation of employees
	Households	General government	Private	Public				
ANNUAL (\$m)								
1999-00	26 618	8 789	(a)10 163	(a)-1 445	44 125	41 192	19 965	
2000-01	28 880	9 143	8 522	112	46 658	44 119	20 938	
2001-02	31 067	9 542	8 281	1 476	50 366	47 002	21 901	
QUARTERLY, TREND (\$m)								
2001-02								
December	7 638	2 416	1 973	401	12 427	n.a.	5 435	
March	7 805	2 439	2 106	389	12 739	n.a.	5 520	
June	7 984	2 483	2 239	364	13 069	n.a.	5 577	
2002-03								
September	8 145	2 536	2 351	344	13 374	n.a.	5 644	
December	8 298	2 594	2 442	333	13 665	n.a.	5 736	
March	8 455	2 635	2 493	327	13 933	n.a.	5 834	

(a) The negative figure for Public gross fixed capital formation and the larger than usual positive figure for Private gross fixed capital formation are the result of the sale of the South Australian electrical transmission network in December quarter 1999. For more information see *National Income, Expenditure and Product, Australian National Accounts, June 2000* (cat. no. 5206.0).

Source: *Australian National Accounts: National Income, Expenditure and Product* (cat. no. 5206.0), and *Australian National Accounts: State Accounts* (cat. no. 5220.0).

4

STATE ACCOUNTS AT CHAIN VOLUME MEASURES(a)

Period	<i>Final consumption expenditure</i>		<i>Gross fixed capital formation</i>			State final demand	Gross State product
	Households	General government	Private	Public			
ANNUAL (\$m)							
1999-00	27 835	9 000	(b)10 516	(b)-2 384	45 859	42 727	
2000-01	28 880	9 143	8 522	-732	46 658	44 119	
2001-02	30 470	9 352	8 180	521	49 463	45 765	
QUARTERLY, TREND (\$m)							
2001-02							
December	7 503	2 336	1 956	397	12 193	n.a.	
March	7 629	2 358	2 082	385	12 453	n.a.	
June	7 750	2 390	2 199	361	12 700	n.a.	
2002-03							
September	7 833	2 430	2 299	342	12 903	n.a.	
December	7 891	2 466	2 383	331	13 070	n.a.	
March	7 949	2 489	2 431	326	13 197	n.a.	

(a) Reference year for chain volume measures is 2000-2001.

(b) The negative figure for Public gross fixed capital formation and the larger than usual positive figure for Private gross fixed capital formation are the result of the sale of the South Australian electrical transmission network in December quarter 1999. For more information see *National Income, Expenditure and Product, Australian National Accounts, June 2000* (cat. no. 5206.0).

Source: *Australian National Accounts: National Income, Expenditure and Product* (cat. no. 5206.0), and *Australian National Accounts: State Accounts* (cat. no. 5220.0).

5

MERCHANDISE EXPORTS, BY SELECTED COMMODITY GROUP(a)

<i>Period</i>	<i>Meat and meat preparations</i>	<i>Wheat</i>	<i>Wine</i>	<i>Wool and sheepskins (excl. wool tops)</i>	<i>Machinery</i>	<i>Metals and metal manufactures</i>	<i>Fish and crustaceans</i>	<i>Road vehicles, parts and accessories</i>	<i>Petroleum and petroleum products</i>	<i>Total(b)</i>
	\$'000	\$'000	\$'000	\$'000	\$'000	\$'000	\$'000	\$'000	\$'000	\$'000
2000-01	262 565	767 524	1 081 599	236 034	381 785	1 019 926	451 841	1 399 489	355 781	8 286 782
2001-02	316 263	1 154 933	1 358 316	256 722	321 445	913 417	474 854	1 613 919	250 728	9 103 263
2002-03	316 018	776 328	1 454 115	256 443	322 648	866 940	448 633	1 411 319	292 260	8 358 721
2001-02										
December	32 136	93 070	105 237	17 789	23 070	62 905	31 363	207 778	20 094	820 447
January	22 604	136 558	61 255	15 357	19 868	63 089	35 902	25 652	16 755	561 836
February	31 183	86 109	83 914	23 524	25 522	82 009	26 187	122 727	2 328	745 077
March	34 065	119 775	127 140	32 960	35 610	88 158	22 365	170 972	44 358	876 068
April	24 011	102 777	122 653	22 942	32 351	74 900	25 363	134 415	8 900	756 976
May	26 189	114 535	146 020	34 208	33 412	85 067	22 517	84 964	32 896	790 765
June	24 324	91 704	148 574	18 967	27 472	58 902	36 472	183 302	16 920	795 950
2002-03										
July	17 509	25 309	115 141	20 534	27 470	67 414	90 175	110 752	27 041	704 054
August	16 462	87 890	121 771	14 491	24 896	65 047	138 036	134 638	25 870	831 220
September	27 759	60 374	168 513	20 766	31 641	71 967	38 038	82 804	23 846	763 577
October	29 930	50 488	141 821	29 122	24 139	81 376	19 854	115 691	25 432	685 880
November	35 128	65 111	96 826	30 990	26 285	74 824	24 647	276 999	19 613	818 604
December	33 023	54 121	129 290	30 611	28 324	90 891	26 171	207 525	30 625	834 092
January	24 490	58 429	81 523	18 060	17 330	69 594	29 408	31 453	46 499	565 496
February	31 344	122 226	99 035	17 604	27 314	73 028	15 364	127 157	33 877	703 147
March	33 984	94 369	123 753	23 278	35 767	76 491	18 597	100 055	18 819	703 612
April	23 846	19 832	126 121	21 820	29 032	62 841	16 543	59 939	6 219	519 543
May	22 289	99 477	124 606	13 996	26 533	62 355	15 667	92 623	18 178	652 890
June	20 256	38 701	125 715	15 169	23 916	71 110	16 135	71 683	16 240	576 607

(a) Restrictions are placed on the release of statistics for certain commodities for reasons of confidentiality. These restrictions do not affect total export and import figures, but they can affect some items within commodity, industry and country tables. See *International Trade* (cat. no. 5422.0), Explanatory Notes, paragraph 30, for more details.

(b) Includes other commodity groups not listed.

Source: ABS data available on request.

6

MERCHANDISE EXPORTS, BY SELECTED COUNTRIES AND COUNTRY GROUPS(a)

Period	European Union					South-East and North-East Asia				
	United States of America	Middle East	United Kingdom	Total European Union	New Zealand	Japan	China	Hong Kong	ASEAN(b)	Total
	\$'000	\$'000	\$'000	\$'000	\$'000	\$'000	\$'000	\$'000	\$'000	\$'000
2000-01	1 354 759	1 335 811	713 525	1 232 563	480 887	963 481	437 939	298 939	683 694	2 882 839
2001-02	1 597 719	1 825 194	784 284	1 337 855	568 712	937 578	406 163	240 066	597 414	2 594 269
2002-03	1 402 278	1 329 440	797 555	1 353 428	627 449	931 027	421 868	223 416	682 497	2 673 892
2001-02										
December	187 722	172 462	54 885	108 541	52 684	71 934	35 887	24 400	41 258	200 880
January	44 318	156 335	34 647	75 972	21 104	39 434	17 643	31 673	54 174	169 495
February	96 390	159 853	48 505	93 817	39 929	61 201	20 759	25 147	54 562	191 254
March	151 253	187 747	70 929	134 750	54 261	59 059	63 357	27 514	53 655	245 651
April	131 376	191 395	64 676	96 837	61 889	74 655	33 973	12 231	41 571	196 230
May	129 531	133 050	79 270	116 645	36 358	53 042	37 268	19 133	51 573	205 755
June	179 897	149 770	78 219	124 464	44 543	84 535	27 599	14 205	53 962	208 237
2002-03										
July	74 918	102 167	69 831	116 422	55 005	129 520	24 783	7 936	52 596	270 954
August	149 657	99 934	69 969	115 131	64 639	189 807	29 888	15 393	47 653	311 563
September	95 913	126 778	107 251	170 585	46 478	91 725	35 019	7 956	53 856	236 810
October	124 514	107 491	77 700	115 453	51 528	64 473	34 478	13 004	63 230	217 091
November	240 775	175 617	37 899	74 682	55 019	35 195	53 288	30 257	52 332	210 876
December	165 146	103 930	71 837	122 023	81 860	54 844	39 916	22 573	87 657	262 046
January	61 787	83 362	46 480	83 484	23 593	86 515	39 490	50 976	46 088	253 584
February	103 810	165 742	60 527	106 139	53 675	50 376	47 362	17 404	62 025	197 366
March	118 216	104 982	63 846	130 449	50 794	60 422	25 578	25 291	63 438	196 793
April	85 426	40 150	67 711	116 557	47 582	36 960	46 334	9 702	52 329	171 161
May	87 477	146 467	65 613	105 990	42 973	51 688	20 310	15 529	51 823	162 700
June	94 639	72 820	58 891	96 515	54 303	79 503	25 423	7 397	49 469	182 949

(a) See *International Merchandise Trade, Australia* (cat. no. 5422.0) for country group definitions.

(b) Figures from September 2001 have been updated to include Cambodia in the ASEAN country grouping.

Source: ABS data available on request.

7

MERCHANDISE IMPORTS, BY SELECTED COMMODITY GROUP(a)

<i>Period</i>	<i>Food, beverages and tobacco</i>	<i>Petroleum and petroleum products</i>	<i>Chemicals</i>	<i>Textiles</i>	<i>Metals and metal manufactures</i>	<i>Machinery</i>	<i>Road vehicle parts and accessories</i>	<i>Other manufactured goods</i>	<i>Total(b)</i>
	<i>\$'000</i>	<i>\$'000</i>	<i>\$'000</i>	<i>\$'000</i>	<i>\$'000</i>	<i>\$'000</i>	<i>\$'000</i>	<i>\$'000</i>	<i>\$'000</i>
2000-01	183 196	968 428	284 227	97 281	315 327	1 205 016	854 759	926 817	5 044 553
2001-02	205 295	869 161	266 527	106 543	332 538	1 399 576	887 698	1 058 212	5 346 782
2002-03	248 620	864 540	291 010	100 940	394 083	1 459 610	997 965	1 103 755	5 730 322
2001-02									
December	17 232	78 949	18 247	6 218	23 108	99 669	52 322	70 152	379 968
January	16 611	1 347	26 023	9 135	33 252	136 134	63 910	94 197	406 187
February	16 447	127 019	19 898	8 556	24 823	109 118	73 577	91 103	490 816
March	12 504	39 514	35 457	8 338	26 536	94 835	72 474	79 012	389 943
April	11 993	78 266	24 836	9 947	27 980	113 247	81 305	79 415	450 747
May	14 585	62 102	27 331	9 842	27 092	117 219	80 639	86 692	445 885
June	15 103	64 704	14 566	8 448	26 002	96 307	73 499	77 657	393 051
2002-03									
July	17 666	66 712	18 971	7 211	33 106	111 832	88 041	91 501	454 751
August	20 355	63 951	19 172	11 171	35 439	121 990	83 005	97 867	476 144
September	19 907	79 309	20 554	8 920	32 522	123 896	77 186	92 519	474 629
October	27 427	75 644	20 997	11 574	36 988	138 644	102 861	111 149	549 856
November	25 409	99 478	18 138	8 474	32 137	129 215	85 053	98 790	523 005
December	23 239	138 539	18 900	7 312	29 398	161 327	57 850	91 780	549 430
January	20 923	10 582	27 344	7 314	37 903	134 051	81 618	100 230	443 531
February	18 018	143 475	37 879	6 713	29 246	91 569	76 701	92 697	522 304
March	19 154	21	38 338	8 263	31 177	95 171	82 654	86 622	384 886
April	19 564	69 369	27 310	8 053	29 854	114 395	82 397	77 592	450 845
May	18 060	84 235	25 766	8 739	35 542	133 892	92 347	79 076	497 340
June	18 897	33 226	17 642	7 196	30 771	103 627	88 252	83 932	403 602

(a) Restrictions are placed on the release of statistics for certain commodities for reasons of confidentiality. These restrictions do not affect total export and import figures, but they can affect some items within commodity, industry and country tables. See *International Trade* (cat. no. 5422.0), Explanatory Notes, paragraph 30, for more details.

(b) Includes other commodity groups not listed.

Source: ABS data available on request.

8

TURNOVER OF RETAIL ESTABLISHMENTS, BY INDUSTRY—TREND

Period	Food retailing	Department stores	Clothing and soft good retailing	Household good retailing	Recreational good retailing	Other retailing	Hospitality and services	Total
	\$m	\$m	\$m	\$m	\$m	\$m	\$m	\$m
2001-02								
April	436.3	99.3	53.5	138.4	28.3	116.5	173.5	1 046.6
May	440.0	99.4	53.8	138.7	28.2	118.4	175.9	1 055.0
June	443.7	99.5	54.1	137.7	28.6	120.0	178.3	1 062.0
2002-03								
July	447.2	99.9	54.6	136.3	29.5	120.9	180.4	1 068.3
August	449.8	100.6	55.5	135.2	30.5	120.9	181.9	1 073.6
September	451.5	101.6	56.7	134.7	31.5	120.2	182.3	1 077.7
October	452.3	102.7	58.2	134.6	32.3	118.9	181.9	1 080.2
November	452.6	103.7	59.6	134.9	32.9	117.2	181.3	1 082.1
December	453.1	104.5	61.0	135.2	33.5	115.9	181.3	1 084.5
January	454.6	105.0	61.9	135.0	34.2	115.7	182.2	1 088.6
February	457.0	105.5	62.5	134.5	35.1	116.8	183.8	1 095.0
March	459.8	106.1	62.9	134.2	35.9	118.8	185.1	1 102.9
April	462.5	106.9	63.2	134.1	36.6	121.1	185.9	1 111.2
May	465.1	107.8	63.5	134.1	37.1	123.3	186.4	1 119.3
June	467.0	108.8	63.7	134.4	37.4	125.5	186.6	1 127.7

Source: Retail Trade, Australia (cat. no. 8501.0).

9

NEW MOTOR VEHICLE SALES, BY TYPE OF VEHICLE

Period	Original			Seasonally adjusted			Trend estimate		
	Passenger vehicles	Other vehicles	Total	Passenger vehicles	Other vehicles	Total	Passenger vehicles	Other vehicles	Total
2001-02									
May	2 889	1 335	4 224	2 866	1 252	4 118	2 932	1 384	4 316
June	2 727	1 258	3 985	2 954	1 405	4 359	2 936	1 406	4 342
2002-03									
July	3 049	1 408	4 457	2 941	1 419	4 360	2 982	1 437	4 419
August	3 108	1 429	4 537	3 010	1 417	4 427	2 985	1 433	4 418
September	2 936	1 251	4 187	3 121	1 460	4 581	2 984	1 433	4 417
October	3 109	1 390	4 499	2 989	1 445	4 434	3 000	1 444	4 444
November	3 134	1 507	4 641	2 925	1 501	4 426	3 050	1 474	4 524
December	3 062	1 469	4 531	2 862	1 276	4 138	3 136	1 513	4 649
January	2 653	1 335	3 988	3 467	1 769	5 236	3 245	1 548	4 793
February	3 290	1 464	4 754	3 476	1 634	5 110	3 347	1 578	4 925
March	3 562	1 585	5 147	3 440	1 512	4 952	3 419	1 603	5 022
April	3 018	1 489	4 507	3 384	1 660	5 044	3 448	1 624	5 072
May	3 581	1 692	5 273	3 506	1 552	5 058	3 450	1 645	5 095
June	3 869	2 220	6 089	3 365	1 697	5 062	3 443	1 671	5 114
2003-04									
July	3 547	1 751	5 298	3 420	1 758	5 178	3 410	1 678	5 088

Source: Sales of New Motor Vehicles, Australia (cat. no. 9314.0.55.001).

10

ACTUAL PRIVATE NEW CAPITAL EXPENDITURE, BY SELECTED INDUSTRY AND TYPE OF ASSET

Period	Industry			Total	Type of asset	
	Mining	Manufacturing	Other selected industries		New buildings and structures	Equipment, plant and machinery
ANNUAL (\$m)						
1999-00	251	899	1 431	2 580	640	1 939
2000-01	434	891	1 537	2 862	692	2 170
2001-02	355	927	1 831	3 113	617	2 496
QUARTERLY, ORIGINAL (\$m)						
2001-02						
December	97	267	527	891	186	705
March	78	198	439	714	136	578
June	101	256	539	897	159	738
2002-03						
September	117	237	466	821	159	662
December	173	306	684	1 162	216	943
March	148	299	461	907	164	743
QUARTERLY, TREND (\$m)						
2001-02						
December	n.a.	n.a.	n.a.	733	151	582
March	n.a.	n.a.	n.a.	810	160	650
June	n.a.	n.a.	n.a.	867	163	704
2002-03						
September	n.a.	n.a.	n.a.	902	169	733
December	n.a.	n.a.	n.a.	929	178	751
March	n.a.	n.a.	n.a.	948	189	759

Source: Private New Capital Expenditure, Australia (cat. no. 5625.0) and ABS data available on request.

11

TOURIST ACCOMMODATION

Period	Licensed hotels with facilities				Motels and guesthouses				Serviced apartments			
	Estab-lish-ments	Guest rooms	Room occu-pancy	Takings	Estab-lish-ments	Guest rooms	Room occu-pancy	Takings	Estab-lish-ments	Guest rooms	Room occu-pancy	Takings
	no.	no.	%	\$'000	no.	no.	%	\$'000	no.	no.	%	\$'000
2000-01												
March	62	3 905	59.9	25 686	146	5 217	55.2	21 889	27	1 280	67.1	7 955
June	61	4 066	55.9	23 849	146	5 230	50.5	20 289	27	1 300	63.2	7 959
2001-02												
September	61	4 078	56.3	23 498	146	5 231	49.7	19 926	27	1 293	60.1	7 019
December	61	4 083	61.0	26 556	144	5 170	51.9	21 044	27	1 283	67.0	8 218
March	62	4 091	61.6	27 321	145	5 196	55.6	22 468	27	1 293	70.5	8 454
June	62	4 364	55.4	24 362	145	5 234	50.4	20 482	29	1 357	65.6	8 078
2002-03												
September	63	4 381	57.9	26 109	144	5 220	49.4	20 150	30	1 430	65.8	8 595
December	62	4 362	64.8	31 051	145	5 232	55.6	23 424	31	1 435	70.3	10 424
March	64	4 653	56.4	26 778	147	5 316	52.9	22 478	32	4 604	60.3	9 879

Source: Tourist Accommodation, Australia (cat. no. 8635.0).

Period	Houses		Total dwelling units		New residential building \$m	Alterations and additions to residential building \$m	Total residential building \$m	Non-residential building \$m	Total building \$m
	Private sector	Total	Private sector	Total					
	no.	no.	no.	no.					
ANNUAL									
2000-01	5 555	5 644	6 659	6 775	735.6	157.3	892.9	718.2	1 611.1
2001-02	8 858	9 177	10 544	10 903	1 202.3	191.6	1 393.9	804.8	2 198.7
2002-03	8 241	8 602	10 385	10 816	1 370.9	270.0	1 640.8	1 003.7	2 644.6
MONTHLY, ORIGINAL									
2001-02									
March	756	774	886	904	97.0	14.3	111.3	74.9	186.2
April	701	714	970	987	111.3	16.2	127.5	55.8	183.3
May	795	823	953	981	119.3	16.5	135.9	55.5	191.4
June	716	742	798	826	96.2	17.6	113.9	68.3	182.1
2002-03									
July	795	843	877	935	113.7	20.1	133.8	53.3	187.2
August	807	838	1 037	1 072	110.2	22.0	132.2	121.0	253.2
September	762	795	825	860	99.7	20.3	120.0	75.1	195.1
October	729	767	1 083	1 125	198.0	20.5	218.5	56.1	274.6
November	720	760	881	933	117.1	20.1	137.2	162.8	300.0
December	570	614	822	882	111.7	19.5	131.2	64.6	195.8
January	493	514	756	783	93.7	16.7	110.3	42.4	152.8
February	633	651	715	745	96.4	20.3	116.6	65.2	181.8
March	667	678	1 040	1 051	120.8	49.8	170.6	48.4	218.9
April	591	614	677	700	86.8	20.3	107.1	90.9	198.0
May	704	720	805	823	107.8	20.5	128.3	112.4	240.6
June	770	808	867	907	115.1	20.0	135.0	111.5	246.5
MONTHLY, TREND									
2001-02									
March	754	786	918	951	109.6	16.0	125.6	67.4	192.9
April	749	777	921	951	107.9	16.6	124.4	62.7	187.1
May	747	774	920	950	105.1	17.3	122.5	59.6	182.1
June	751	780	923	955	102.8	18.2	121.0	60.4	181.4
2002-03									
July	755	787	924	960	102.0	18.9	120.9	66.7	187.6
August	751	787	925	966	103.2	19.5	122.8	76.2	199.0
September	736	775	922	967	106.0	19.9	125.9	84.6	210.6
October	710	749	913	960	109.5	20.0	129.5	89.9	219.4
November	677	713	898	943	112.4	20.1	132.4	90.0	222.4
December	644	676	870	912	112.9	20.2	133.1	85.7	218.9
January	623	650	844	880	111.3	20.6	131.9	80.5	212.4
February	621	643	830	859	109.0	21.1	130.2	77.4	207.5
March\i	634	654	820	845	107.0	21.5	128.4	78.9	207.3
April	655	675	818	841	105.6	21.6	127.2	85.0	212.3
May	679	700	821	843	105.0	21.6	126.7	93.0	219.6
June	707	731	826	850	104.8	21.6	126.3	106.5	232.9

Source: Building Approvals, Australia (cat. no. 8731.0) and ABS data available on request.

13

BUILDING COMMENCEMENTS

Period	New houses		Total dwelling units(a)		New residential building \$m	Alterations and additions to residential building \$m	Non-residential building		
	Private sector	Total	Private sector	Total			Private sector	Total	Total building
	no.	no.	no.	no.			\$m	\$m	\$m
1999-00	7 729	7 856	9 266	9 410	1 044.8	198.8	351.2	576.9	1 820.5
2000-01	5 303	5 390	6 442	6 556	779.2	161.4	390.4	729.6	1 670.1
2001-02	8 030	8 281	9 702	9 991	1 236.2	197.3	575.0	761.9	2 195.5
2000-01									
March	1 157	1 179	1 562	1 597	186.5	43.6	70.9	111.2	341.2
June	1 422	1 443	1 605	1 628	196.0	47.9	91.9	300.7	544.6
2001-02									
September	1 835	1 857	2 365	2 400	324.0	45.1	145.3	188.7	557.9
December	2 217	2 273	2 543	2 613	307.8	52.7	167.2	199.4	559.9
March	1 853	1 949	2 232	2 335	280.0	50.5	122.6	173.7	504.1
June	2 125	2 202	2 563	2 644	324.4	49.0	139.9	200.1	573.6
2002-03									
September	2 300	2 401	2 617	2 730	355.6	55.9	177.7	249.0	660.5
December	1 897	2 004	2 636	2 759	402.7	75.2	144.7	268.1	746.0
March	1 849	1 933	2 262	2 376	323.8	58.4	155.7	188.6	570.8

(a) Includes conversions.

Source: Building Activity, Australia (cat. no. 8752.0).

VALUE OF BUILDING WORK DONE AND COMPLETED DURING PERIOD

Period	New houses		New residential building			Non-residential building		Total building		
	Private sector	Total	Private sector	Total	Alterations and additions to residential building	Total residential building	Private sector	Total	Private sector	Total
	\$m	\$m	\$m	\$m	\$m	\$m	\$m	\$m	\$m	\$m
VALUE OF BUILDING WORK DONE										
1999-00	798.1	812.2	984.5	1 000.0	195.5	1 195.4	409.9	629.4	1 585.1	1 824.8
2000-01	679.7	686.9	835.5	845.0	161.9	1 006.9	395.0	624.0	1 385.4	1 630.9
2001-02	852.9	871.7	1 043.3	1 065.3	193.9	1 259.2	522.1	778.2	1 754.6	2 037.4
2000-01										
March	162.6	164.0	193.9	195.7	40.7	236.4	97.2	145.7	330.1	382.1
June	161.6	163.8	197.3	200.3	48.2	248.6	97.2	163.9	340.6	412.5
2001-02										
September	184.2	187.2	227.7	231.2	48.7	279.9	112.7	170.6	386.9	450.6
December	219.4	222.6	261.9	265.5	48.4	314.0	146.9	213.8	456.3	527.7
March	215.1	220.0	262.5	268.6	46.9	315.5	131.3	185.0	439.7	500.4
June	234.2	242.0	291.2	300.0	49.8	349.8	131.3	208.9	471.7	558.7
2002-03										
September	259.7	269.0	318.5	328.6	56.4	385.0	163.1	224.6	537.4	609.6
December	255.9	265.3	319.6	330.0	67.9	397.9	151.7	212.0	538.7	609.9
March	267.3	275.9	312.6	322.6	60.4	382.9	147.6	209.3	520.0	592.2
VALUE OF BUILDING WORK COMPLETED										
1999-00	713.5	730.1	867.6	886.2	191.9	1 078.1	363.0	538.4	1 419.4	1 616.4
2000-01	758.7	763.6	942.8	949.0	154.4	1 103.4	436.3	591.5	1 526.5	1 694.9
2001-02	750.8	766.9	884.9	904.3	180.6	1 084.9	430.7	718.7	1 489.7	1 803.5
2000-01										
March	173.0	174.3	216.5	217.9	34.9	252.8	82.4	138.5	330.9	391.3
June	188.0	188.3	213.7	213.9	52.2	266.1	137.9	164.9	402.4	431.0
2001-02										
September	149.9	153.2	173.1	177.6	55.0	232.6	75.5	121.1	300.5	353.7
December	194.3	197.6	220.5	224.4	38.1	262.5	129.3	259.9	386.3	522.4
March	174.8	177.2	231.9	234.8	39.4	274.2	83.8	127.4	353.7	401.6
June	231.7	238.9	259.4	267.4	48.1	315.6	142.1	210.3	449.2	525.9
2002-03										
September	209.1	219.4	240.1	252.2	45.5	297.7	111.7	164.9	396.6	462.6
December	242.1	247.2	356.7	362.6	62.1	424.7	130.0	161.6	548.5	586.4
March	196.3	202.9	227.5	234.4	55.2	289.6	144.7	194.8	427.1	484.4

Source: Building Activity, Australia (cat. no. 8752.0).

<i>Period</i>	<i>Pigmeat</i> <i>tonnes</i>	<i>Beef</i> <i>tonnes</i>	<i>Mutton</i> <i>tonnes</i>	<i>Lamb</i> <i>tonnes</i>	<i>Sawn timber</i> <i>m³</i>
2000-01	36 679	82 533	36 103	61 893	389 417
2001-02	48 329	85 882	30 342	64 285	434 577
2002-03	64 146	88 363	30 893	60 113	435 984
2000-01					
June	10 524	19 172	8 321	15 451	97 933
2001-02					
September	10 274	18 271	6 290	11 694	103 774
December	9 754	21 325	8 221	17 627	111 797
March	12 583	23 748	8 895	17 232	111 697
June	15 718	22 539	6 936	17 732	107 309
2002-03					
September	15 531	19 663	9 351	11 493	111 724
December	14 865	23 357	10 073	14 864	110 734
March	16 345	23 930	7 521	17 947	107 267
June	17 405	21 413	3 948	15 809	106 259

Source: *Livestock Products, Australia* (cat. no. 7215.0) and ABS data available on request.

<i>Period</i>	<i>Food</i>	<i>Alcohol and tobacco</i>	<i>Clothing and footwear</i>	<i>Housing</i>	<i>House furnishings, supplies and services</i>	<i>Health</i>	<i>Transportation</i>	<i>Communication</i>	<i>Recreation</i>	<i>Education</i>	<i>Miscellaneous</i>	<i>All groups</i>
ANNUAL AVERAGE (1989-90 = 100.0)												
2000-01	136.7	198.3	111.9	104.3	117.1	169.5	138.0	104.7	122.9	225.9	159.3	133.5
2001-02	143.1	207.3	111.1	108.2	120.6	173.0	135.8	105.8	126.9	235.8	165.1	137.2
2002-03	149.3	214.1	112.3	115.2	122.5	183.4	139.6	109.7	131.8	246.1	171.5	142.7
QUARTERLY (1989-90 = 100.0)												
2001-02												
March	144.6	207.8	110.6	108.6	120.0	173.7	133.9	106.2	129.0	240.6	166.0	137.7
June	143.6	210.0	113.0	109.5	120.9	178.0	138.4	107.3	129.9	240.6	167.0	139.1
2002-03												
September	145.4	210.4	111.5	112.1	121.4	178.1	138.0	109.2	131.5	240.7	171.2	140.3
December	148.1	213.3	112.2	113.0	123.2	178.1	138.8	109.6	131.5	240.7	170.9	141.5
March	151.9	216.0	111.9	117.9	122.5	183.2	144.0	109.9	132.4	251.5	171.6	144.6
June	151.9	216.8	113.5	117.8	122.9	194.0	137.4	110.1	131.7	251.5	172.2	144.3
PERCENTAGE CHANGE FROM SAME QUARTER OF PREVIOUS YEAR												
2001-02												
March	3.7	3.6	0.1	4.0	2.2	1.8	-2.3	1.8	4.9	4.2	3.8	2.7
June	3.0	3.3	0.6	4.4	1.3	3.9	-1.4	3.3	6.0	4.2	3.6	3.0
2002-03												
September	3.5	2.2	2.9	5.0	0.7	4.2	1.2	5.4	6.8	4.2	4.7	3.7
December	3.0	3.8	0.0	4.7	1.9	5.2	3.3	3.4	4.7	4.2	4.3	3.6
March	5.0	3.9	1.2	8.6	2.1	5.5	7.5	3.5	2.6	4.5	3.4	5.0
June	5.8	3.2	0.4	7.6	1.7	9.0	-0.7	2.6	1.4	4.5	3.1	3.7
PERCENTAGE CHANGE FROM PREVIOUS QUARTER												
2001-02												
March	0.6	1.1	-1.4	0.6	-0.7	2.6	-0.4	0.2	2.7	4.1	1.3	0.8
June	-0.7	1.1	2.2	0.8	0.8	2.5	3.4	1.0	0.7	0.0	0.6	1.0
2002-03												
September	1.3	0.2	-1.3	2.4	0.4	0.1	-0.3	1.8	1.2	0.0	2.5	0.9
December	1.9	1.4	0.6	0.8	1.5	0.0	0.6	0.4	0.0	0.0	-0.2	0.9
March	2.6	1.3	-0.3	4.3	-0.6	2.9	3.7	0.3	0.7	4.5	0.4	2.2
June	0.0	0.4	1.4	-0.1	0.3	5.9	-4.6	0.2	-0.5	0.0	0.3	-0.2

Source: Consumer Price Index (cat. no. 6401.0).

17

ESTIMATED RESIDENT POPULATION AND COMPONENTS OF POPULATION CHANGE(a)

Period	Net migration			Total increase	Population at end of period
	Natural increase	Interstate	Overseas(b)		
1999-00	6 306	-3 531	3 829	7 219	1 505 038
2000-01	5 495	-2 418	2 765	6 690	1 511 728
2001-02	5 887	-1 854	4 481	8 514	1 520 242
2000-01					
December	1 385	-789	566	1 374	1 508 028
March	1 691	-821	1 276	2 358	1 510 386
June	1 272	-190	46	1 342	1 511 728
2001-02					
September	1 244	-632	1 130	1 742	1 513 470
December	1 264	-171	1 185	2 278	1 515 748
March	1 737	-529	1 665	2 873	1 518 621
June	1 642	-522	501	1 621	1 520 242
2002-03					
September	948	-17	1 283	2 214	1 522 456
December	1 484	-741	937	1 680	1 524 136

(a) Differences between the sum of the components and the total of population growth are attributed to intercensal discrepancy.

Source: Australian Demographic Statistics (cat. no. 3101.0).

18

BIRTHS, DEATHS, MARRIAGES AND DIVORCES

Period	Registrations			
	Births	Deaths	Marriages	Divorces
1999-00	17 896	11 590	8 428	4 197
2000-01	17 414	11 919	7 689	4 072
2001-02	17 481	11 594	7 474	4 448
2000-01				
September	4 441	3 294	1 092	1 056
December	4 274	2 889	2 703	1 031
March	4 402	2 711	2 175	824
June	4 297	3 025	1 719	1 161
2001-02				
September	4 398	3 154	1 096	1 387
December	4 109	2 845	2 444	1 173
March	4 564	2 827	2 135	930
June	4 410	2 768	1 799	958
2002-03				
September	4 355	3 407	1 019	1 062
December	4 327	2 843	2 419	n.y.a.

Source: Australian Demographic Statistics (cat. no. 3101.0).

19

CIVILIAN LABOUR FORCE STATUS(a)

Period	Employed full-time		Employed part-time		Total employed		Unemployed		Labour force	
	Males	Females	Males	Females	Males	Females	Males	Females	Males	Females
ANNUAL AVERAGE ('000)										
2000-01	322.6	156.7	54.8	143.5	377.4	300.2	32.6	20.2	410.0	320.4
2001-02	319.2	153.2	59.2	153.1	378.4	306.3	31.8	20.0	410.2	326.2
2002-03	304.7	159.6	52.1	156.5	356.8	316.1	25.6	19.0	382.3	335.1
MONTHLY, ORIGINAL ('000)										
2001-02										
May	321.0	152.4	59.8	156.5	380.8	308.9	31.2	19.3	412.0	328.2
June	318.3	147.0	61.9	164.7	380.2	311.7	29.9	19.5	410.1	331.2
2002-03										
July	325.3	149.7	56.8	155.6	382.1	305.3	26.0	18.5	408.1	323.8
August	324.8	150.6	54.8	155.7	379.6	306.3	28.8	20.1	408.4	326.4
September	327.8	154.8	63.3	158.7	391.1	313.5	26.9	21.2	418.0	334.7
October	322.4	155.4	62.2	157.5	384.6	312.9	26.2	18.9	410.8	331.8
November	327.1	154.1	57.2	160.1	384.3	314.2	26.7	17.0	410.9	331.2
December	337.6	162.7	56.3	154.4	393.9	317.1	24.3	17.6	418.2	334.6
January	336.0	163.1	51.0	149.4	387.0	312.5	30.5	18.8	417.5	331.4
February	338.4	168.6	50.6	150.0	389.0	318.6	31.5	19.9	420.5	338.5
March	331.8	166.1	59.8	158.4	391.6	324.5	26.7	20.0	418.3	344.4
April	333.2	163.6	58.7	158.6	391.9	322.2	28.8	17.9	420.6	340.0
May	336.7	165.1	56.4	158.2	393.2	323.3	29.1	18.7	422.3	342.0
June	340.8	160.9	54.5	161.8	395.3	322.7	27.3	19.3	422.6	342.0
2003-04										
July	341.1	168.5	57.1	151.6	398.2	320.1	23.5	19.0	421.7	339.1
MONTHLY, TREND ('000)										
2001-02										
May	321.8	150.5	60.5	159.2	382.3	309.7	30.3	19.5	412.6	329.2
June	322.6	150.7	59.8	159.2	382.4	309.9	30.0	19.6	412.3	329.5
2002-03										
July	323.3	150.8	59.5	158.8	382.8	309.6	29.3	19.9	412.1	329.5
August	324.1	151.1	59.6	158.1	383.7	309.2	28.4	20.1	412.1	329.3
September	325.3	152.0	59.6	157.2	384.9	309.2	27.4	20.0	412.3	329.2
October	327.1	153.6	59.0	156.5	386.1	310.1	26.6	19.6	412.7	329.7
November	329.2	156.2	57.8	155.8	387.0	312.0	26.3	19.1	413.4	331.1
December	331.2	159.4	56.6	155.1	387.8	314.5	26.5	18.5	414.3	333.1
January	333.0	162.4	55.5	155.0	388.5	317.4	27.1	18.2	415.6	335.6
February	334.6	164.8	54.9	155.2	389.5	320.0	27.7	18.0	417.2	338.1
March	336.0	166.3	54.9	155.8	390.9	322.1	28.2	18.2	419.1	340.3
April	337.1	166.9	55.4	156.4	392.5	323.3	28.4	18.6	420.9	341.8
May	338.3	167.0	55.9	156.8	394.2	323.8	28.3	18.9	422.5	342.7
June	339.5	167.0	56.4	156.9	395.9	323.9	28.0	19.3	423.9	343.1
2003-04										
July	340.5	166.8	56.8	156.6	397.3	323.4	27.6	19.6	424.9	343.0

(a) Population aged 15 years and over.

Source: Labour Force, Australia, Preliminary (cat. no. 6202.0).

Period	Civilian population			Unemployment rate			Participation rate		
	Males aged 15 and over	Females aged 15 and over	Persons aged 15-19	Males all ages	Females all ages	Persons all ages	Males	Females	Persons
	'000	'000	%	%	%	%	%	%	%
ANNUAL AVERAGE									
2000-01	591.6	616.9	17.9	8.0	6.3	7.2	69.3	51.9	60.4
2001-02	595.4	620.5	18.5	7.8	6.1	7.1	68.9	52.6	60.6
2002-03	600.7	625.5	16.8	6.7	5.7	6.2	69.3	53.6	61.3
MONTHLY, ORIGINAL									
2001-02									
May	597.0	622.1	17.9	7.6	5.9	6.8	69.0	52.8	60.7
June	597.4	622.5	17.5	7.3	5.9	6.7	68.6	53.2	60.8
2002-03									
July	597.9	623.0	13.0	6.4	5.7	6.1	68.3	52.0	59.9
August	598.4	623.5	16.3	7.0	6.2	6.7	68.2	52.4	60.1
September	598.9	624.0	16.6	6.4	6.3	6.4	69.8	53.6	61.5
October	599.3	624.4	16.3	6.4	5.7	6.1	68.5	53.1	60.7
November	599.8	624.8	14.9	6.5	5.1	5.9	68.5	53.0	60.6
December	600.2	625.2	15.5	5.8	5.3	5.6	69.7	53.5	61.4
January	600.9	625.8	19.7	7.3	5.7	6.6	69.5	53.0	61.0
February	601.6	626.3	18.3	7.5	5.9	6.8	69.9	54.0	61.8
March	602.3	626.9	15.9	6.4	5.8	6.1	69.4	54.9	62.0
April	602.7	627.1	18.0	6.8	5.3	6.1	69.8	54.2	61.9
May	603.0	627.4	20.1	6.9	5.5	6.3	70.0	54.5	62.1
June	603.4	627.6	17.4	6.5	5.6	6.1	70.0	54.5	62.1
2003-04									
July	603.8	628.1	15.5	5.6	5.6	5.6	69.8	54.0	61.8
MONTHLY, TREND									
2001-02									
May	n.a.	n.a.	n.a.	7.4	5.9	6.7	69.1	52.9	60.8
June	n.a.	n.a.	n.a.	7.3	5.9	6.7	69.0	52.9	60.8
2002-03									
July	n.a.	n.a.	n.a.	7.1	6.0	6.6	68.9	52.9	60.7
August	n.a.	n.a.	n.a.	6.9	6.1	6.5	68.9	52.8	60.7
September	n.a.	n.a.	n.a.	6.6	6.1	6.4	68.8	52.8	60.6
October	n.a.	n.a.	n.a.	6.5	5.9	6.2	68.9	52.8	60.7
November	n.a.	n.a.	n.a.	6.4	5.8	6.1	68.9	53.0	60.8
December	n.a.	n.a.	n.a.	6.4	5.6	6.0	69.0	53.3	61.0
January	n.a.	n.a.	n.a.	6.5	5.4	6.0	69.2	53.6	61.2
February	n.a.	n.a.	n.a.	6.6	5.3	6.1	69.4	54.0	61.5
March	n.a.	n.a.	n.a.	6.7	5.4	6.1	69.6	54.3	61.8
April	n.a.	n.a.	n.a.	6.7	5.4	6.2	69.8	54.5	62.0
May	n.a.	n.a.	n.a.	6.7	5.5	6.2	70.1	54.6	62.2
June	n.a.	n.a.	n.a.	6.6	5.6	6.2	70.2	54.7	62.3
2003-04									
July	n.a.	n.a.	n.a.	6.5	5.7	6.1	70.4	54.6	62.3

(a) Population aged 15 years and over.

Source: Labour Force, Australia, Preliminary (cat. no. 6202.0).

21

AVERAGE WEEKLY EARNINGS OF EMPLOYEES

Period	Males			Females			Persons		
	Full-time adult ordinary time earnings	Full-time adult total earnings	All males total earnings	Full-time adult ordinary time earnings	Full-time adult total earnings	All females total earnings	Full-time adult ordinary time earnings	Full-time adult total earnings	All employees total earnings
ANNUAL AVERAGE (\$ per week)									
2000-01	811.30	864.40	746.80	685.20	703.90	491.20	765.70	806.40	619.70
2001-02	830.20	890.18	775.00	731.10	744.33	505.18	797.18	841.68	643.75
2002-03	864.85	914.08	790.10	772.03	785.75	530.28	833.75	871.05	667.48
QUARTERLY, ORIGINAL (\$ per week)									
2001-02									
February	831.00	900.50	773.20	741.80	754.60	497.90	801.50	852.20	639.20
May	829.40	899.40	783.50	735.10	749.80	503.80	799.40	851.80	649.90
2002-03									
August	829.90	877.40	765.50	757.20	770.30	543.20	805.50	841.40	661.80
November	851.10	902.10	781.00	755.80	769.30	527.20	818.90	857.20	662.40
February	884.60	933.00	810.50	781.60	795.60	550.70	850.90	888.00	692.30
May	893.80	943.80	803.40	793.50	807.80	500.00	859.70	897.60	653.40
QUARTERLY, TREND (\$ per week)									
2001-02									
February	828.80	893.10	774.90	737.70	751.10	505.10	799.00	846.70	643.80
May	828.50	892.40	774.10	744.30	757.90	513.50	801.00	848.30	649.10
2002-03									
August	835.80	892.80	776.80	750.50	763.90	527.90	807.50	850.20	660.70
November	853.40	903.70	784.90	761.80	775.50	535.10	822.80	861.20	669.40
February	876.10	923.30	797.10	777.30	791.60	532.50	843.10	879.20	672.60
May	898.70	944.80	810.20	794.70	809.80	523.80	864.60	899.60	671.30

Source: Average Weekly Earnings, States and Australia (cat. no. 6302.0).

22

SECURED HOUSING FINANCE COMMITMENTS(a)

Period	Original		Seasonally adjusted		Trend	
	Dwelling units	Value	Dwelling units	Value	Dwelling units	Value
	no.	\$m	no.	\$m	no.	\$m
2001-02						
April	4 112	458	4 151	461	4 368	480
May	4 880	525	4 508	486	4 448	486
June	4 681	498	4 671	511	4 504	494
2002-03						
July	4 988	524	4 711	502	4 500	501
August	4 166	476	4 367	508	4 427	504
September	3 825	454	4 171	493	4 307	503
October	4 329	517	4 261	517	4 193	500
November	4 336	529	4 038	494	4 133	499
December	4 322	539	4 128	496	4 164	507
January	3 765	465	4 233	517	4 272	523
February	4 112	508	4 321	522	4 410	547
March	4 814	617	4 728	600	4 540	573
April	4 583	580	4 634	593	4 648	598
May	5 089	671	4 903	650	4 730	619
June	4 663	616	4 570	614	4 779	635

(a) Excludes alterations and additions. Includes refinancing.

Source: Housing Finance for Owner Occupation, Australia (cat. no. 5609.0).

23

FINANCE COMMITMENTS

Period	Commercial finance commitments			Personal finance commitments			Total lease finance commitments
	Fixed loan facilities	Revolving credit facilities	Total commercial finance commitments	Fixed loan facilities	Revolving credit facilities	Total personal finance commitments	
	\$m	\$m	\$m	\$m	\$m	\$m	
2001-02							
April	476.6	226.0	702.6	169.8	151.7	321.5	13.3
May	457.3	220.1	677.4	193.8	158.7	352.5	16.3
June	595.1	370.9	966.0	188.7	187.9	376.6	17.3
2002-03							
July	593.0	413.3	1 006.3	198.3	180.2	378.5	15.2
August	524.6	484.1	1 008.7	195.7	180.2	375.9	12.3
September	524.0	433.9	957.9	180.2	150.1	330.4	13.4
October	545.4	372.3	917.7	190.4	182.3	372.8	14.2
November	519.2	341.6	860.8	199.1	190.1	389.2	12.8
December	706.9	373.0	108.9	210.0	204.9	414.9	14.2
January	616.6	272.2	888.9	210.5	147.3	357.8	15.3
February	469.0	244.5	713.5	210.0	155.4	365.4	13.6
March	589.7	289.8	879.5	218.9	204.8	423.6	17.3
April	602.5	208.2	810.7	212.2	186.4	398.6	13.1
May	571.8	269.8	841.6	234.1	205.9	440.0	15.5
June	740.5	316.2	1 056.6	228.8	210.5	439.3	18.5

Source: ABS data available on request.

SOURCES FOR SUMMARY TABLES (TABLES 1 AND 2)

- (1) *Australian National Accounts: National Income, Expenditure and Product*, cat. no. 5206.0—and ABS data available on request
- (2) International Merchandise Trade, ABS data available on request
- (3) *Retail Trade, Australia*, cat. no. 8501.0, Monthly
- (4) *Sales of New Motor Vehicles, Australia*, cat. no. 9314.0.55.001 Monthly
- (5) *Private New Capital Expenditure, Australia*, cat. no. 5625.0, Quarterly—and Ausstats data
- (6) *Tourist Accommodation, Australia*, cat. no. 8635.0, Quarterly
- (7) *Building Approvals, Australia*, cat. no. 8731.0, Monthly
- (8) *Building Activity, Australia*, cat. no. 8752.0, Quarterly
- (9) *Engineering Construction Activity, Australia*, cat. no. 8762.0, Quarterly
- (10) *Manufacturing Production, Australia, Preliminary*, cat. no. 8301.0, Quarterly
- (11) *Livestock Products, Australia*, cat. no. 7215.0, Quarterly—and ABS data available on request
- (12) *Actual and Expected Private Mineral Exploration, Australia*, cat. no. 8412.0, Quarterly
- (13) *Consumer Price Index*, cat. no. 6401.0, Quarterly
- (14) *Producer Price Indexes, Australia*, cat. no. 6427.0, Quarterly
- (15) *House Price Indexes: Eight Capital Cities*, cat. no. 6416.0, Quarterly
- (16) *Australian Demographic Statistics*, cat. no. 3101.0, Quarterly
- (17) *Labour Force, Australia, Preliminary*, cat. no. 6202.0, Monthly
- (18) *Job Vacancies, Australia*, cat. no. 6354.0, Quarterly
- (19) *Industrial Disputes, Australia*, cat. no. 6321.0, Monthly
- (20) *Average Weekly Earnings, States and Australia*, cat. no. 6302.0, Quarterly
- (21) *Wage Cost Index, Australia*, cat. no. 6345.0, Quarterly
- (22) *Housing Finance for Owner Occupation, Australia*, cat. no. 5609.0, Monthly
- (23) *Lending Finance, Australia*, cat. no. 5671.0, Monthly—and ABS data available on request
- (24) *Reserve Bank of Australia Bulletin*

FOR MORE INFORMATION...

- INTERNET* **www.abs.gov.au** the ABS web site is the best place to start for access to summary data from our latest publications, information about the ABS, advice about upcoming releases, our catalogue, and Australia Now—a statistical profile.
- LIBRARY* A range of ABS publications is available from public and tertiary libraries Australia-wide. Contact your nearest library to determine whether it has the ABS statistics you require, or visit our web site for a list of libraries.
- CPI INFOLINE* For current and historical Consumer Price Index data, call 1902 981 074 (call cost 77c per minute).
- DIAL-A-STATISTIC* For the latest figures for National Accounts, Balance of Payments, Labour Force, Average Weekly Earnings, Estimated Resident Population and the Consumer Price Index call 1900 986 400 (call cost 77c per minute).

INFORMATION SERVICE

Data which have been published and can be provided within five minutes are free of charge. Our information consultants can also help you to access the full range of ABS information—ABS user-pays services can be tailored to your needs, time frame and budget. Publications may be purchased. Specialists are on hand to help you with analytical or methodological advice.

- PHONE* **1300 135 070**
- EMAIL* **client.services@abs.gov.au**
- FAX* 1300 135 211
- POST* Client Services, ABS, GPO Box 796, Sydney 2001

WHY NOT SUBSCRIBE?

ABS subscription services provide regular, convenient and prompt deliveries of ABS publications and products as they are released. Email delivery of monthly and quarterly publications is available.

- PHONE* 1300 366 323
- EMAIL* subscriptions@abs.gov.au
- FAX* 03 9615 7848
- POST* Subscription Services, ABS, GPO Box 2796Y, Melbourne 3001



2130740009037
ISSN 1039-8880

RRP \$21.00